

Introducing CLI RDP Zero Client

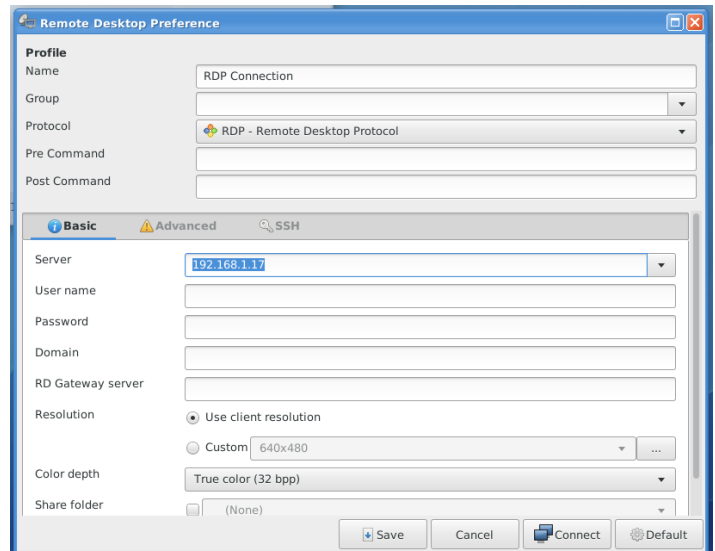
What's so exciting about the RDP Zero Client? Simple setup—secure deployment!

Software Features:

- Remote Desktop or Published Apps
- Server detection using RD Gateway
- Up to 32-bit color
- TLS Security
- Custom Resolution

Hardware Features:

- Optional Wi-Fi
- Two Video Ports
- Kiosk mode for User desktop lockdown
- Easy clone capability and Secure VNC Remote display using Device Manager or CLI cloud based MCDM remote management tools
- Remote Reboot, Reset to Defaults
- 4-6 USB ports (model dependent) for USB redirection and support of most peripheral integrations
- Legacy Parallel and Serial ports on select hardware



Manageability:

CLI's Device Manager Software provides the ability to centrally manage the units from your desktop or laptop. This powerful tool gives administrators complete centralized control of all CLI desktops, dramatically reducing support costs. OR, IF YOU PREFER

CLI's MCDM cloud management tool. This web based remote management mechanism enables you to configure, monitor, and manage CLI thin client devices. This cloud based tool can be accessed securely anytime, anywhere for real time management of your CLI devices.

Why are we calling it Zero Client?

This unit is configured for one application only – RDC. The Zero Client launches the Remote desktop connection when powered-on or from a restart. Easy to setup and lockdown so users can't change anything...for more information...

Contact your CLI [Sales Representative](#) for price quotes or for a [30 day evaluation](#).

CLI's RDP Zero Client ...Simple VDI Connectivity!