



## CLI Device Manager

### Comprehensive Device Management

CLI Device Manager (DevMan) is an comprehensive management software that provides a powerful, yet simple and easy way to manage the complete family of CLI thin clients from a single, centralized management console.

The management console is inherently intuitive, using industry standard protocols to manage CLI thin client appliances. The software can be installed on a server or a PC, making installation virtually effortless.

Unrestricted, straightforward licensing CLI Device Manager offers the scalability you need as well as a customizable Graphical User Interface (GUI). This flexible tool supports a variety of user cases and preferences to get IT managers up and running in just minutes.

### Visibility Discovery and Delivery

Device discovery can automatically detect CLI thin clients installed on LAN or WAN in seconds, including other SNMP-compatible thin client devices. IT professionals can now view the current CLI device configuration including firmware version, device location, IP address and memory size. The integrated database provides for comprehensive asset tracking capabilities and can store or export the database for fast and easy report generation.

Unlike some device management software needing steep training—and configuration, CLI Device Manager user interface is intuitive and ready to deploy within a matter of clicks.

### At a Glance

The easiest way to manage CLI thin clients without any learning curve. Regardless of models or network locations, CLI Device Manager provides the purpose-built secure thin client management solution.

- Rapidly achieve deployment and configure images via wired or wireless
- Open and export databases for easy asset reporting
- Flexibly install without dedicated servers or databases
- Set up secure device policy and configuration management
- Customize the user interface
- Support installation on PC and server platforms
- Apply simple and straightforward licensing right out of the box

Typ	MAC	Firmware	Group	(Name)	DOC	Memory	Bootloader	Brand	Model	Location
	0050AC900034	WES-10e5721		WEMBS90C	991	222		COMPUTER	ST5600X	
	0050AC9010CB	WBT-M.E6601		LABLASER	63	255	2e9de21	COMPUTER	ST5600	
	0050AC9010ED	WBT-E6600.7		T9010ED	123	255	2ec3c51	COMPUTER	ST5600	
	0050AC901128	XPE-10e5713f		WEMBS901	991	990		COMPUTER	ST5600X	
	0050AC901139	WBT-E5518.3		T901139	32	544	2e9ddbd	COMPUTER		
	0050AC901172	WBT-E6600.7		T901172	123	255	2ec3abd	COMPUTER		
	0050AC90117A	XPE-10e5713f		XPEMB9011	499	990		COMPUTER	ST5600X	
	0050AC901191	XPE-10e5613f		XPEMB9011	991	990		COMPUTER	ST5600X	
	0050AC90119B	WBT-M.E6601		T90119B	123	511	2ea9378	COMPUTER	ST5600	
	0050AC901203	WES-10e5721		WEMBS901	991	990		COMPUTER	ST5600X	



# CLI Device Manager

## Remote Management With Ease

Remote problem trouble-shooting is greatly simplified, since devices can be shadowed (remotely displayed) with full keyboard and mouse control, rebooted and reset to the default state. All tasks can be scheduled for execution at later times. CLI Device Manager allows IT professionals and system administrators to rapidly deploy, configure and maintain CLI thin client devices. CLI Device Manager dramatically reduces deployment and ongoing support costs.

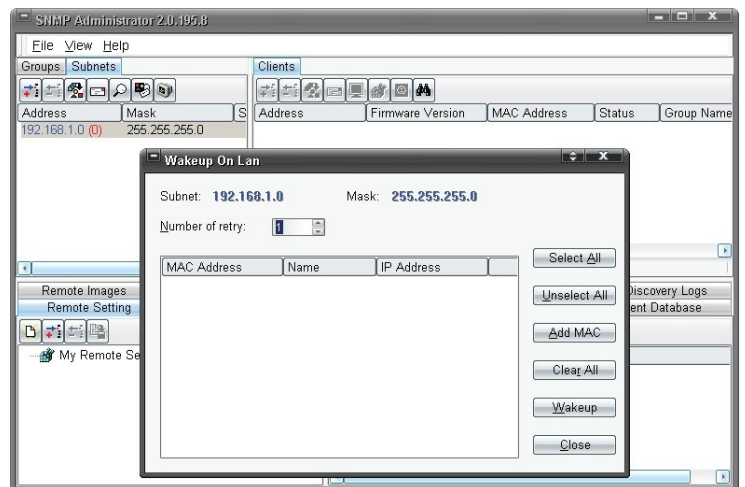
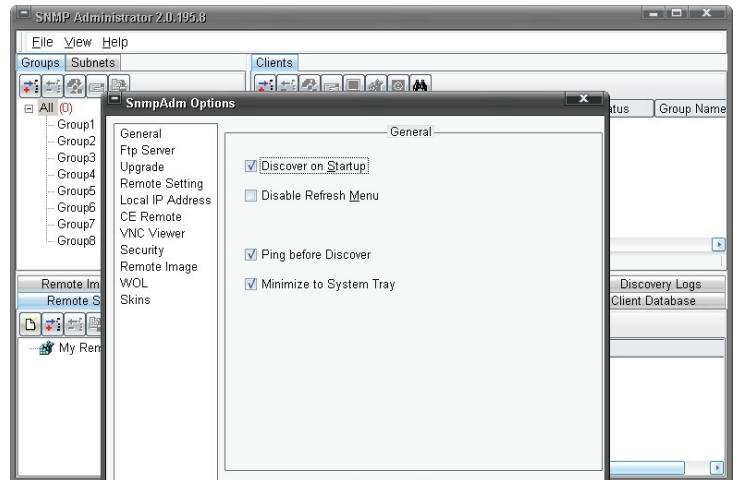
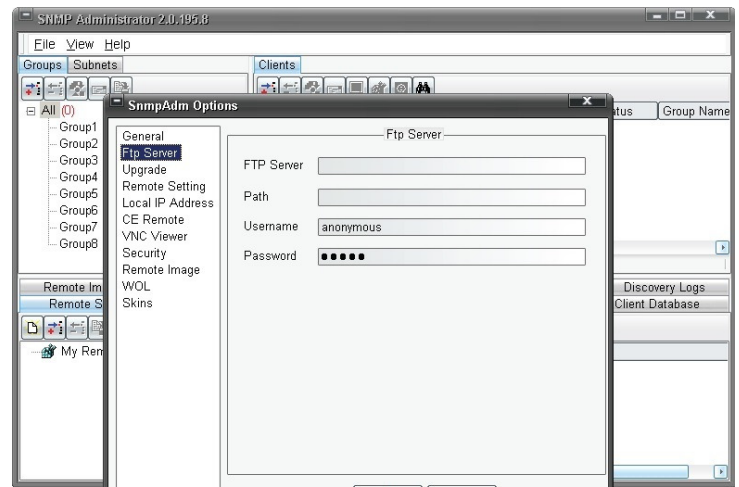
## Group, Apply Policy, and Deploy

You can group your deployment based on functional profiles in the organization. The console provides robust, centralized command and control of all CLI thin client devices. Firmware, BIOS, device patching, updates or configuration changes can be performed in groups or done automatically, eliminating the need for system administrators to manage individual desktops. Flash updates, device configuration, and patches can be performed immediately or schedule to be performed at a later time. CLI Device Manager provides the flexibility to schedule with unattended updates or run during periods when network bandwidth utilization is low.

## Locate, Clone and Upgrade

A firmware image can be cloned and applied to other devices or retrieved. Integrated management console allows you to view all process and progress effortlessly. It includes all the checkbox features:

- Full remote configuration of all client setting
- Shadowing via VNC
- Remote shutdown, wake-up, reboot
- On-demand or scheduled upgrade
- Remote firmware update via FTP network
- Real-time status reporting
- Imaging based on profile groups or subnets
- Client registration from both server or client



Hardware Requirements	Software Compatibility	System Compatibility
<b>CPU &amp; Memory</b> <ul style="list-style-type: none"> <li>❖ Pentium III class CPU or greater</li> <li>❖ Minimum of 256 MB of RAM</li> <li>❖ 5MB of available hard disk space</li> </ul>	<b>Microsoft</b> <ul style="list-style-type: none"> <li>❖ Windows 10, Windows 7</li> <li>❖ Windows Vista</li> <li>❖ Windows XP Professional</li> <li>❖ Windows Server 2010, 2012, 2016</li> <li>❖ Windows 2000 Professional</li> </ul>	Device management applicable to Windows CE, XPe, WES 09, WES7, WES8, Windows 10 IoT Enterprise, CLI UB Linux and CLI LX3 Linux thin clients. Security and messaging provides the ability to secure SNMP community and multiple administrators access based credentials

CLI, Inc. 735 Challenger Street, Brea, CA 92821



© 2017 CLI, Inc. All rights reserved. Specifications are subject to change without notice. CLI is a registered trademark. All other trademarks are the property of their respective owners. CLI shall not be liable for technical or editorial errors or omissions contained herein.