

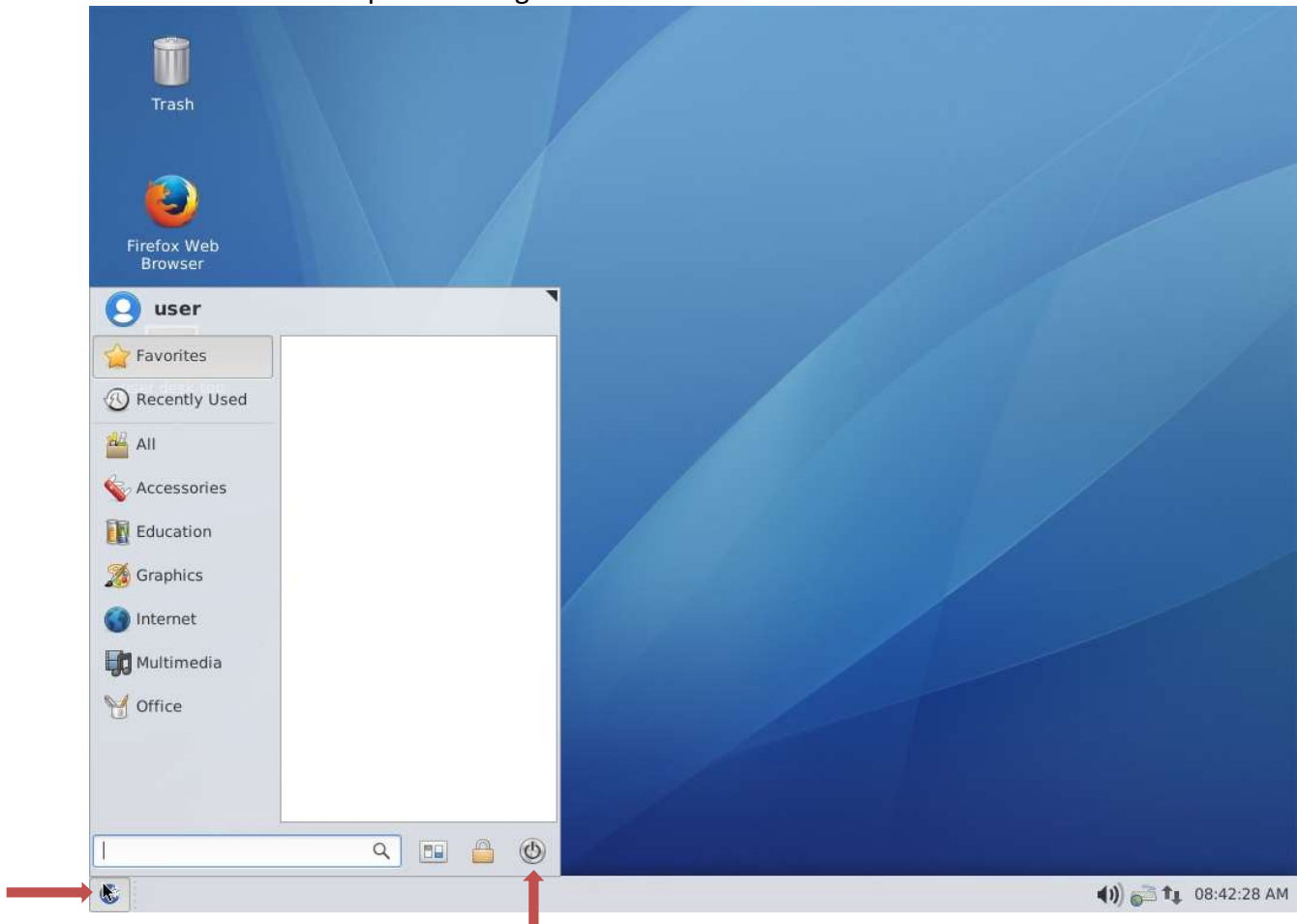
Upon initial startup, the user (unprivileged) level desktop will auto login and not all system configuration parameters are available to be modified. If connected to a network with a DHCP server present, a network connection will be made. The user LX3 Linux desktop will be displayed as shown below.



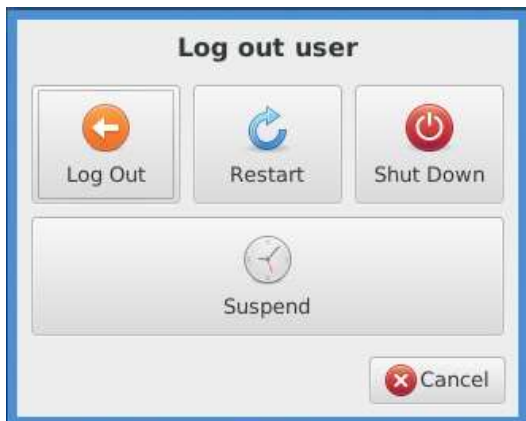
Since the default auto login is for unprivileged access, the user will essentially have access to the configured connections, and limited access to the system.

CLI LX3 Linux is highly configurable. Custom images can be created to conform to your organization's unique requirements. NOTE: Before attempting modifications, use DevMan, the CLI management console (see last paragraph below), and remotely save the image. System configuration parameters can be set; applications can be added using the Package Manager when logged in as Administrator (root). Connections can be set to autostart upon power up or restart. Users accounts can be added (new IDs and Passwords) and logins configured.

To logout, restart or shutdown from the User desktop, click on the CLI globe in the lower left corner to invoke the options dialogue.



Click the power button to logout, restart or shutdown.



Desktop identification

The account credentials are as follows.

The default desktop user ID is user:

Logon: user
 PW: 12345678

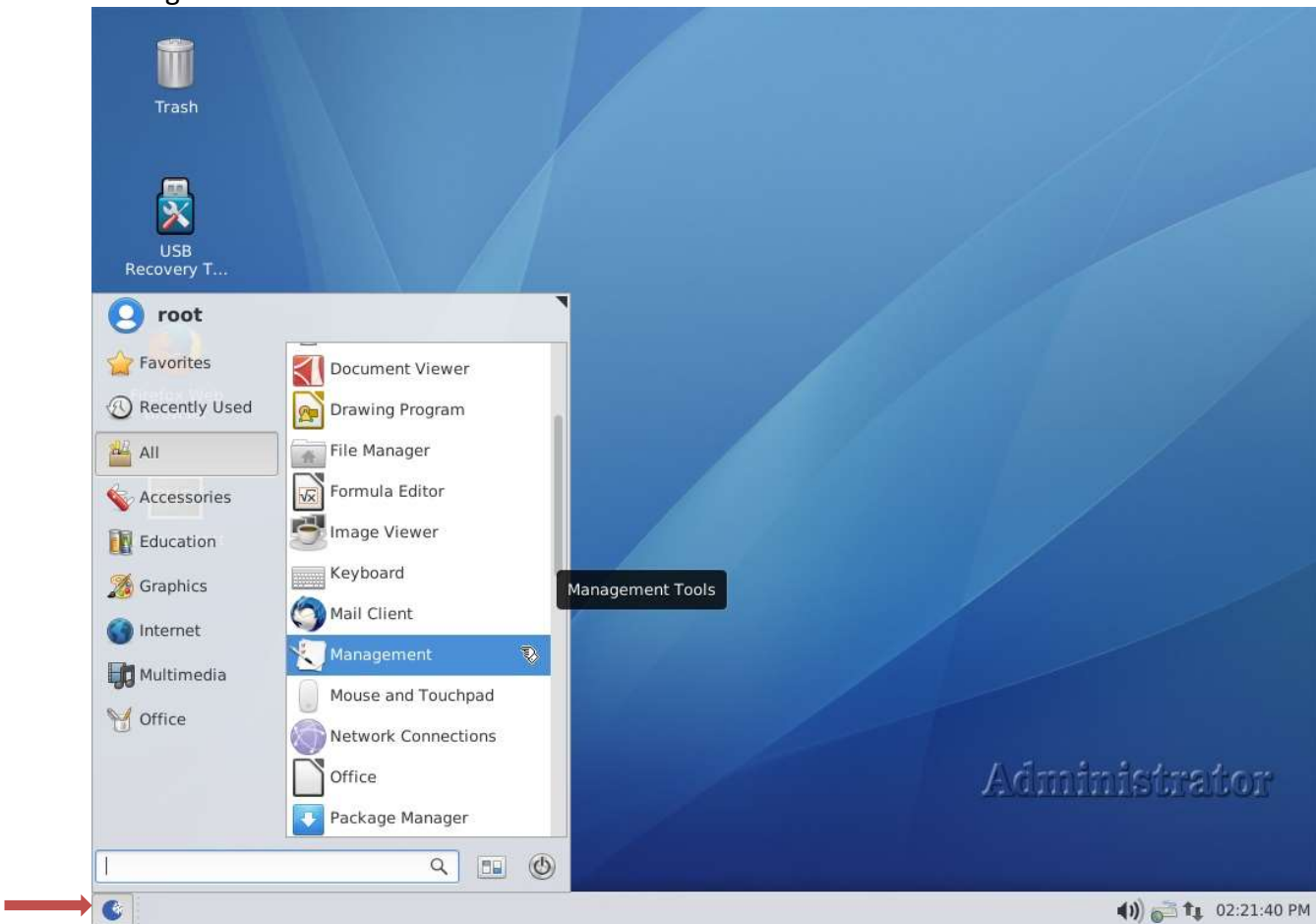
The administrator desktop user ID is root:

Logon: root
 PW: 12345678

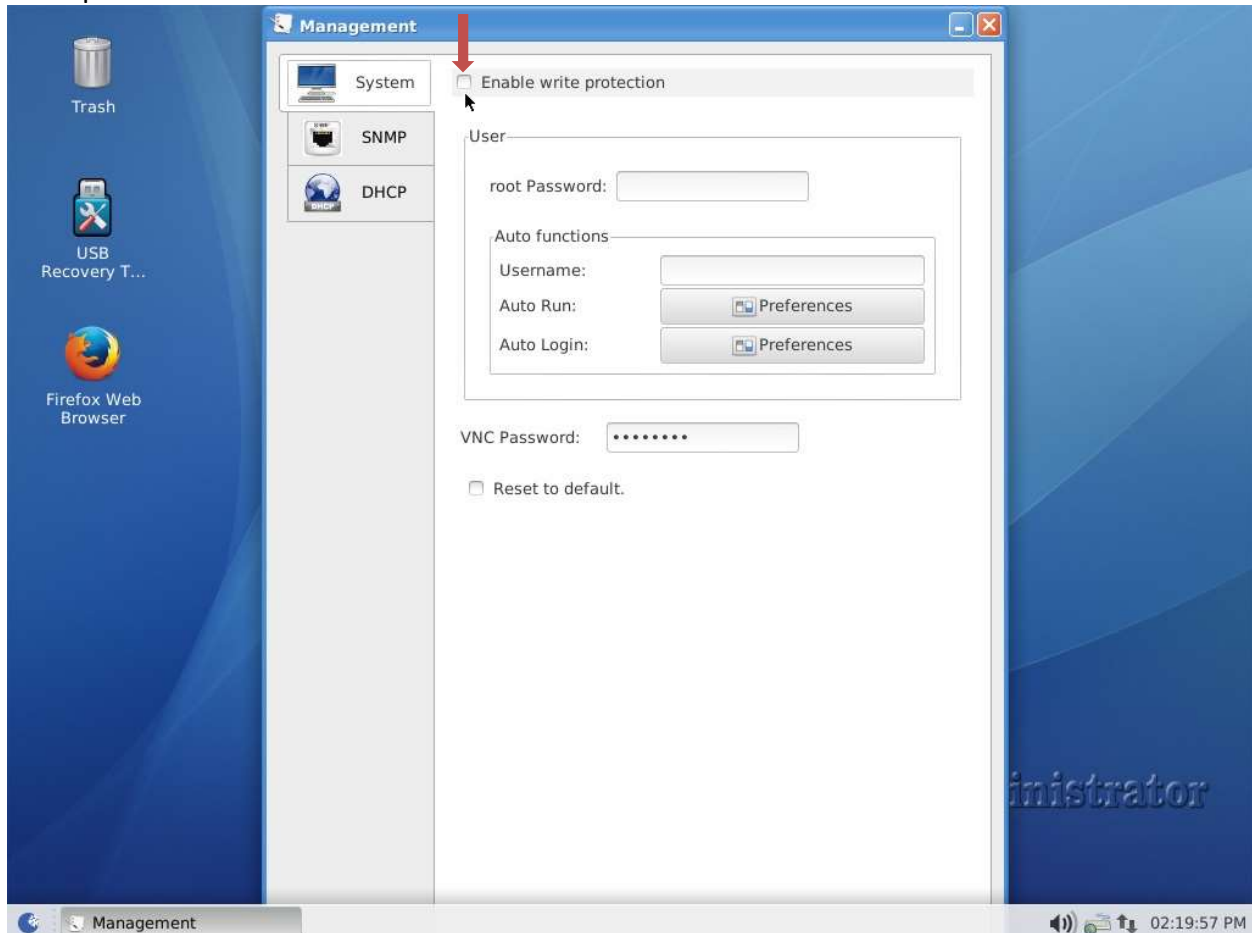
Password for VNC when using DevMan is: 12345678

Enable Write Protection

This setting can be made in the Administrator/Root desktop with the Management Dialogue. To access this feature, login as root then left click the CLI globe and select All and then Management.



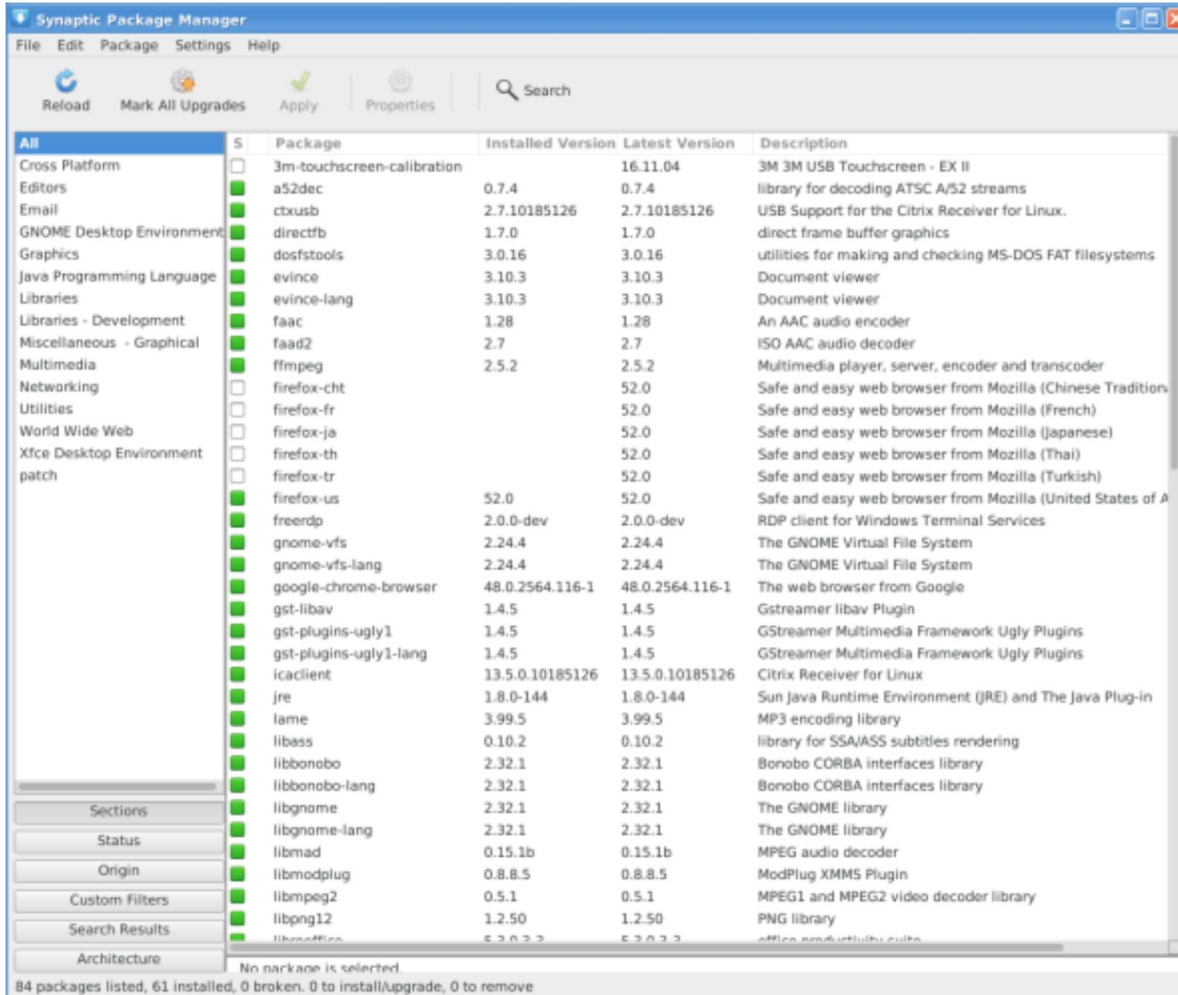
In the Management Dialogue, click the System Tab (default). Notice the “Enable write protection” radio button at the top and the “Reset to default” radio button at the bottom. Once you have completed your set up and are ready to deploy the thin client to your end users, check the write enable button then click on OK -and reboot. This will save your setup locally on the thin client and insure that no further changes can be made to the device image. Whenever the thin client is rebooted it will automatically revert to the same point in time when the Enable write protection button was checked.



Not recommended but checking the “Reset to default” button and rebooting will delete all changes you have made to the thin client image including installed applications. You will have to rebuild the thin client image using the package manager to install applications such as the browser, Terminal Emulation, RDP, Citrix, etc. This may be useful if you just want to build a very application specific image

Package Manager

Download other available application packages relevant for your use case with the Package Manager (requires Internet). To access this feature, login as root then left click the CLI globe and select All and then Package Manager. Click Reload to update all packages prior to making a selection. Check the boxes of applications you wish to install and check the Mark button. Then click on the Apply checkmark at the top to begin the download and installation. More information about this procedure can be found in the CLI LX3 User Guide.



Get the complete CLI LX3 Linux User guide. Use a PC to get the user guide in PDF format. Best when viewed with Adobe reader on a PC.

General usage guide for CLI LX3 thin clients [LX3 Linux \(LX3\) general usage guide](#) LX3Version: 3.2

Download CLI's Free Management Tool, DevMan, for installation on a PC or Server.

<https://computerlab.com/index.php/downloads/category/27-device-manager>

Contact CLI Technical Support with any questions at 1-800-727-5250 option 3, or click on this [Submit a SUPPORT Request](#) link. View CLI's Support page for knowledge base articles, Firmware downloads and documentation at: <https://computerlab.com/index.php/support>