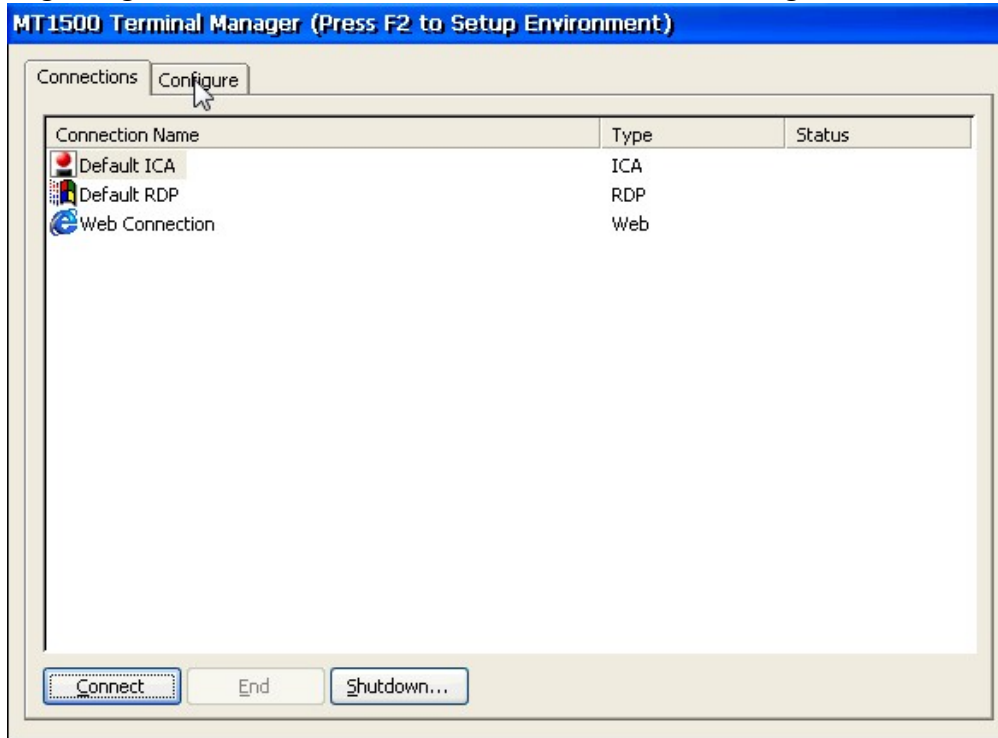


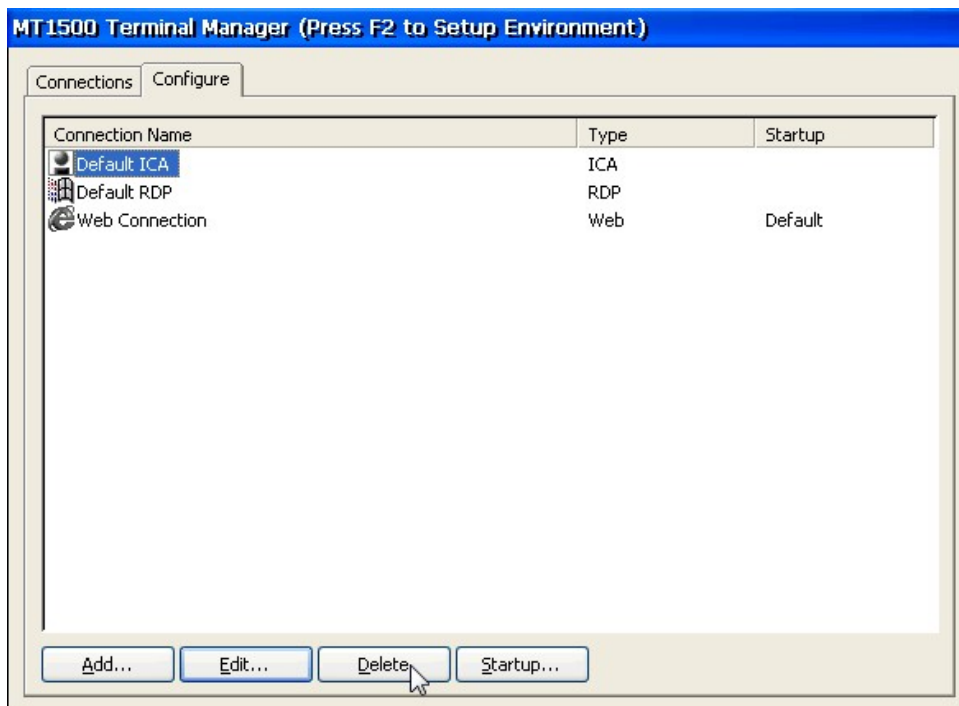
Simple step by step setup on a CLI CE thin Client to emulate ET2000 look and feel (example is MT1500, however steps are identical on AG6601H)

Step 1:

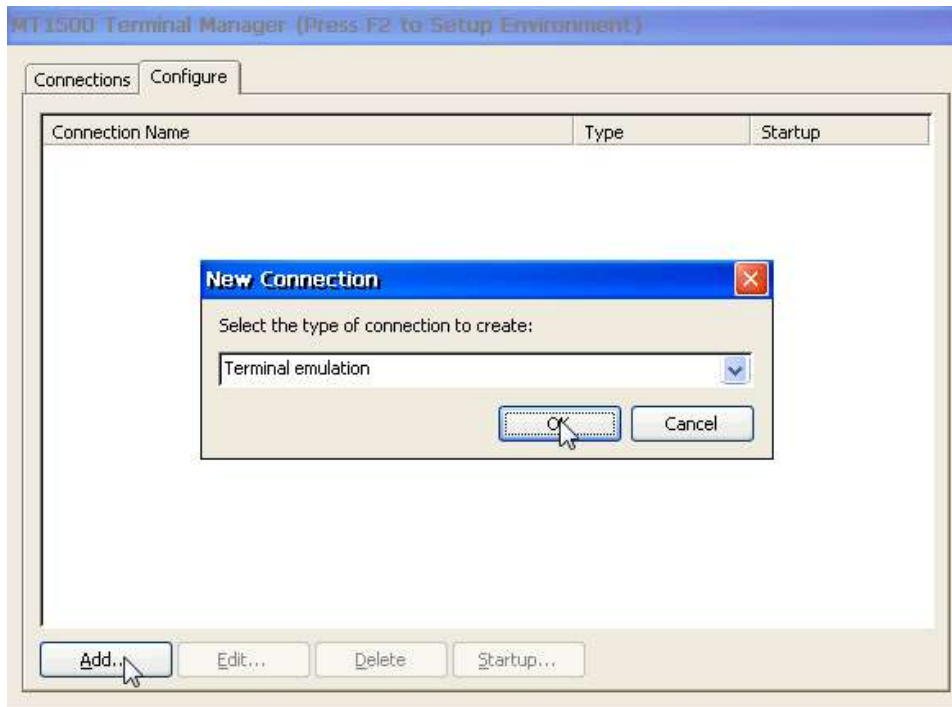
Beginning with a default terminal, select and click the 'Configure' tab.



Step2: Highlight and delete all of the default sessions until all are removed.

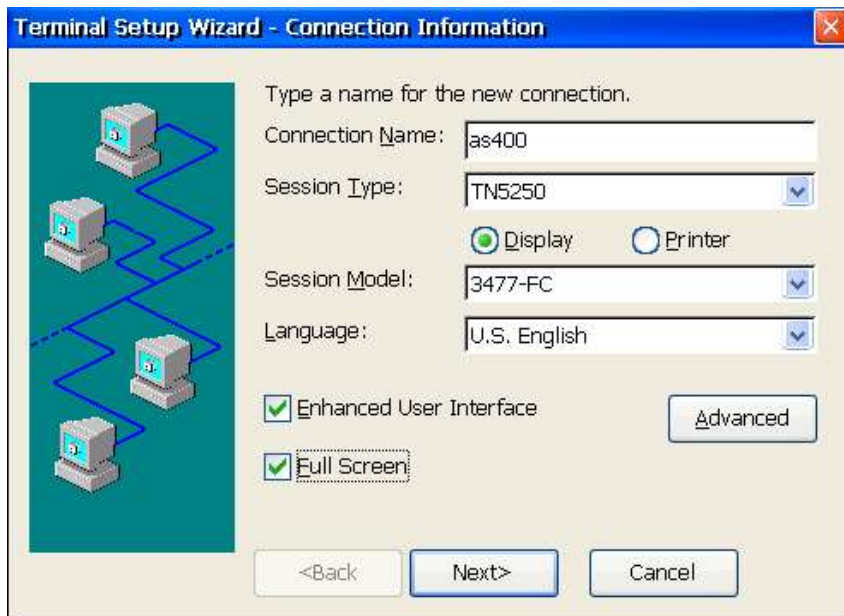


Step3: Click the 'Add' button to create a new session



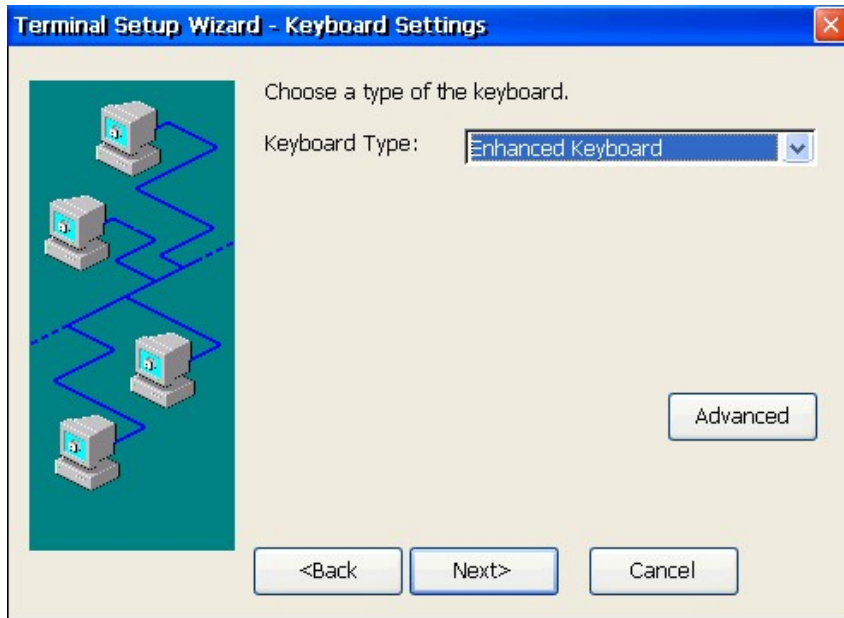
Step 4:
Select Terminal Emulation then click 'OK' (If Ericom PowerTerm Emulation was purchased it would also be a valid choice from the pull down menu)

Step 5:
Create a connection name and select the 'Full Screen' checkbox then click 'Next'



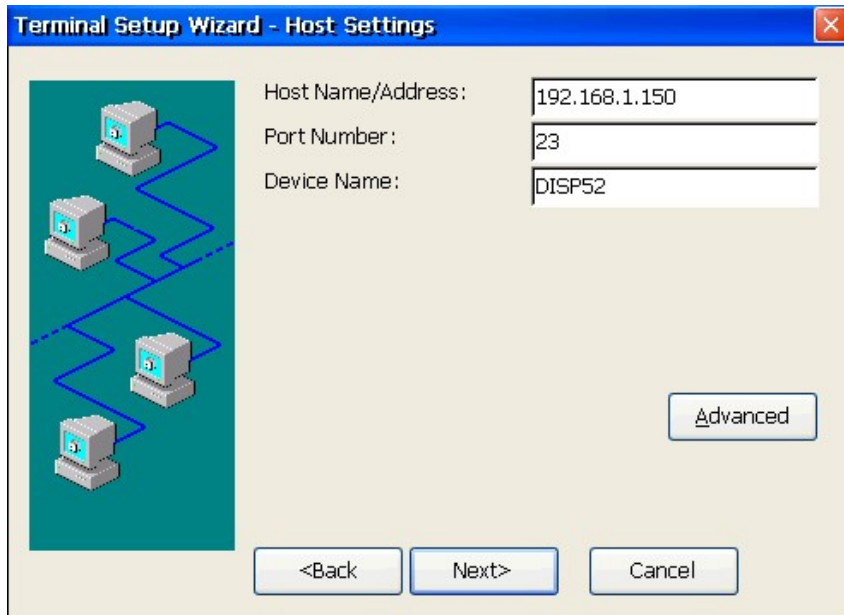
Step 6:

Select the keyboard type (enhanced for 104 or 122Keyboard) then click 'Next'

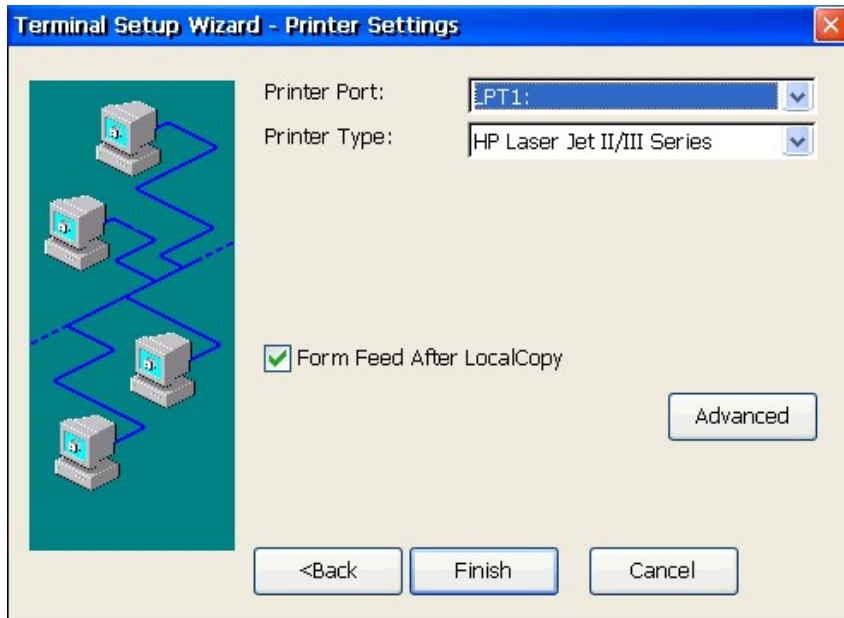


Step 7:

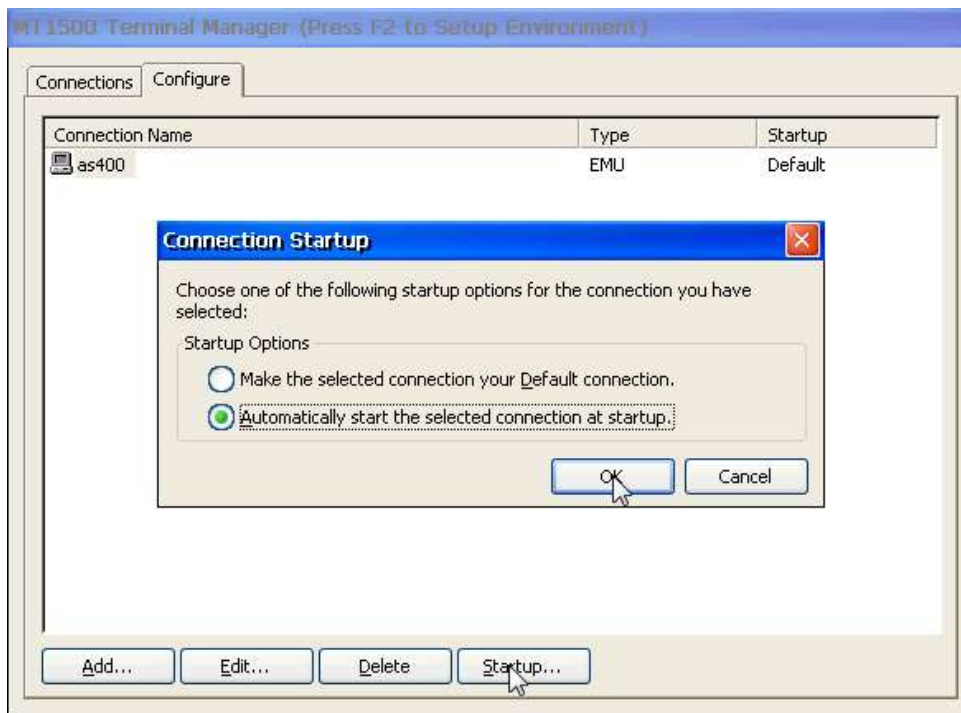
Enter the Address port and device name (optional) then click 'Next'



Step 8:
Set local printer settings, or if no local printer is used click 'Finish'

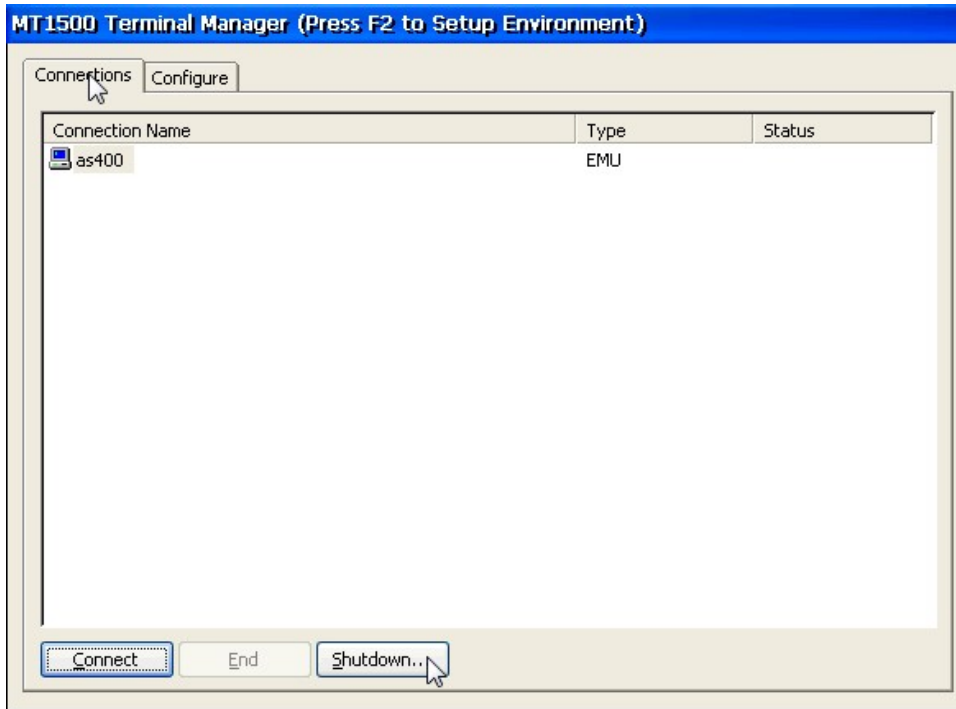


Step 9: Click the 'Startup' button then select 'Automatically start the select connection at startup' then click 'OK'



At this point the setup procedure is complete

To begin the full screen Terminal emulation session, select 'Shutdown' then 'Restart Terminal'



Here is what the end user will see



Additional steps exist on the CE Thin Client to 'Lock down' the configuration settings to prevent user tampering.

The CE Thin client requires setting a password to protect the configuration. If the password is ever lost, the terminal would have to be reset to default, from either the keyboard, or remotely via our DevMan management software. Additionally several different levels of lockdown are possible to allow differing levels of user access to some non-critical configuration settings (keyboard speed, video resolution, mouse speed if a mouse is used) or none at all.

Download CLI's Free Management Tool, DevMan, for installation on a PC or Server.

<https://computerlab.com/index.php/downloads/category/27-device-manager>

Contact CLI Technical Support with any questions at 1-800-727-5250 option 3, or click on this [Submit a SUPPORT Request](#) link. View CLI's Support page for knowledge base articles, Firmware downloads and documentation at: <https://computerlab.com/index.php/support>