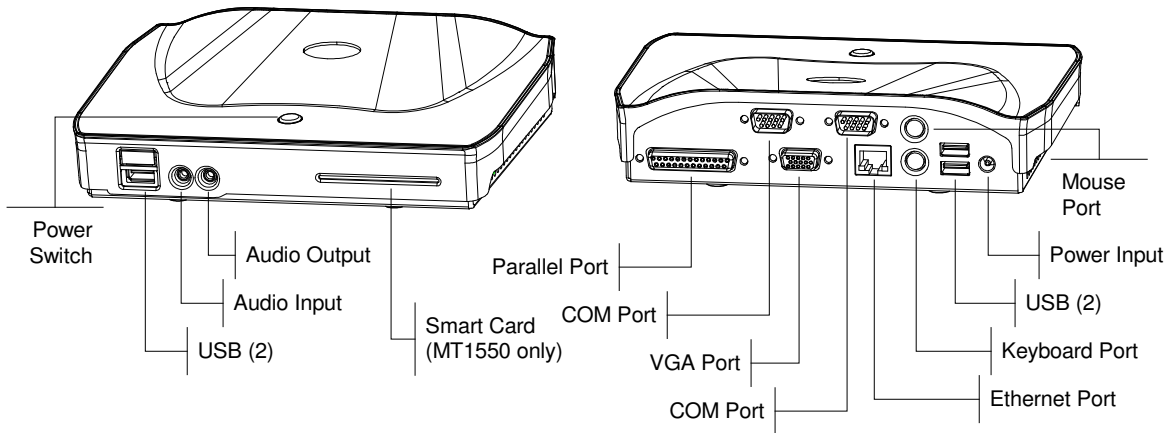
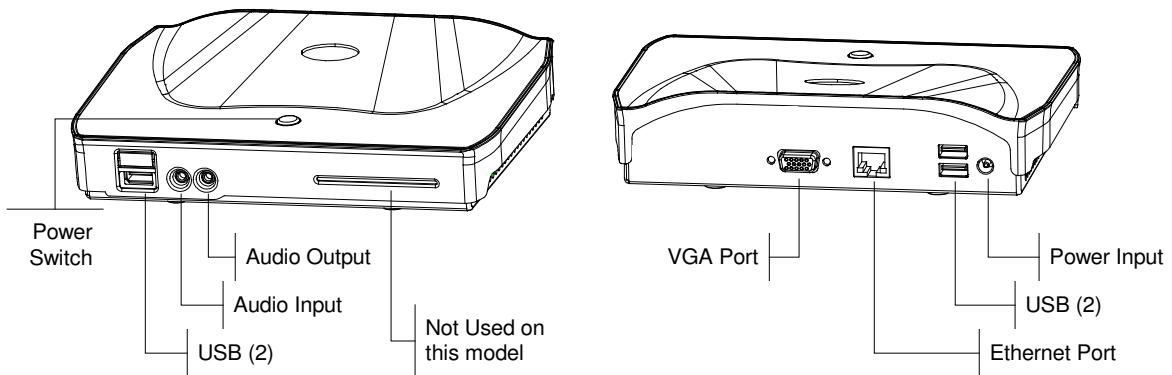


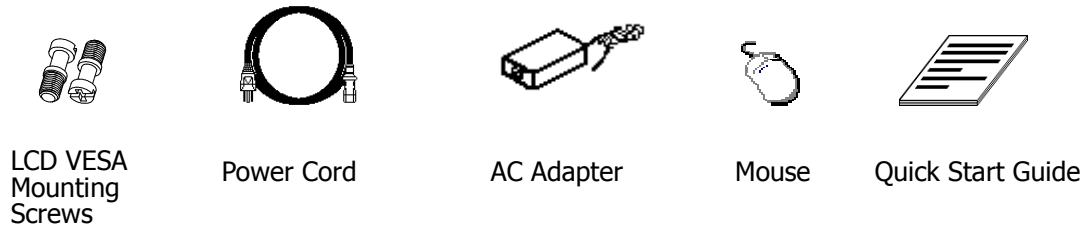
MT1500 and MT1550 Hardware Layout:



MT1200 Hardware Layout:

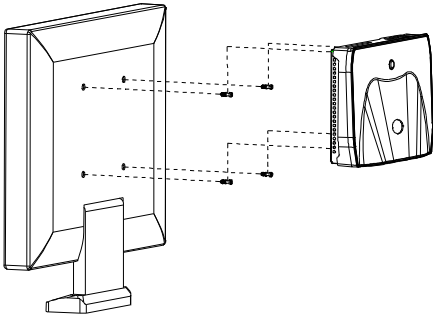


You should find the following equipment in the package:



Optional LCD monitor Assembly

The MT1200 / MT1500 / MT1550 can be attached to the back of a LCD Monitor (VESA standard) using the LCD VESA mounting screws as illustrated below.



LCD Monitor: VESA standard, 100mm x 100mm
(LCD monitor is available as an option from CLI)

Documentation

The operation of this thin client is described in the CLI Thin Client User Manual. If you have not obtained this manual, please do so now:

- Go to the CLI Web Site: www.computerlab.com
- Click **Technical Support** in the column at the right on the home page.
- Scroll down to **Documentation** and click **CLI Thin Client User Manual**.

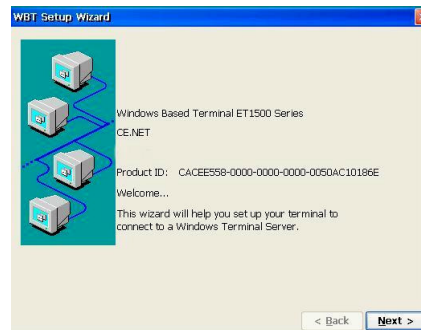
If you will be responsible for remote administration and have not yet obtained the CLI Thin Client SNMP Administrator, do so now:

- From the **Documentation** menu (see above), click **CLI SNMP Administrator User Manual**.
- Request the SNMP Administrator software by email to support@computerlab.com. Include the serial number of the terminal in this email.

Initial Terminal Setup

When you power on the terminal for the first time, the Setup Wizard will be used for initial setup of the terminal's properties.

Welcome Dialog Box

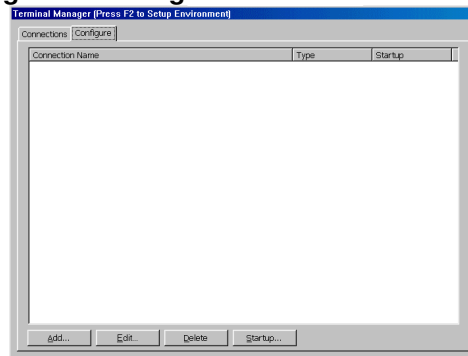


This dialog box provides product information. A 15-second countdown displays at the top.

Press **ESC** to bypass the following screens to use default settings (DHCP enabled, Display resolution of 640x480 @ 60Hz, no security, etc). If a valid network connection exists with DHCP support, you will now be connected to the network.

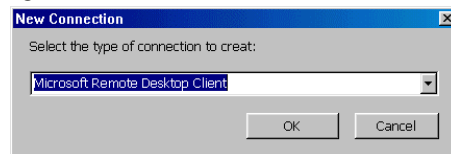
The Terminal Manager dialog box will display. This will be the first dialog box after startup screen whenever you power on the terminal.

Terminal Manager Dialog Box - Configure



Select Configure tab and click **Add** to use the New Connection dialog box

New Connection Dialog Box



Select the desired type of connection to create. The connection list includes **Citrix ICA Client**, **Microsoft Remote Desktop Client**, and **Terminal Emulation**.

Refer to User Manual for Configuration details.

Hot Keys

The following are shortcut keys for Windows CE:

- ◆ **Ctrl+Alt+End**
Return to Terminal Manager screen.
- ◆ **Ctrl+Alt+UpArrow**
Switch to the previous active connection (if any).
- ◆ **Ctrl+Alt+DownArrow**
Switch to next active connection (if any).
- ◆ **Ctrl+Alt+Home**
Go to the Default connection (if any or if not already there).
- ◆ **F2**
Press F2 from the Terminal Manager screen to invoke Terminal Properties screen.

FCC Statement

This equipment has been tested and found to comply with the limits for Class A digital devices, pursuant to Part 15 of the FCC Rules. These limits are designed to provide reasonable protection against harmful interference when the equipment is operated in a commercial environment. This equipment generates, uses and can radiate radio frequency energy and, if not installed and used in accordance with the instruction manual, may cause harmful interference to radio communications. Operation of this equipment in a residential area is likely to cause harmful interference, in which case the user will be required to correct the interference at his own expense.

This device complies with Part 15 of the FCC Rules. Operation is subject to the following two conditions: (1) this device may not cause harmful interference, and (2) this device must accept any interference received, including interference that may cause undesired operation.